

# Fall, Winter, & Spring Breaks

## VOLUNTEER MISSIONS HANDBOOK



[www.southeastbaptistassociation.com](http://www.southeastbaptistassociation.com)

a Resort Ministry of Southeast Baptist Association

---

**Peter Copeland**

Mission Projects Coordinator

**John Carr**

Associational Missionary

Southeast Baptist Association  
2220 Perry Lane Road  
Brunswick, Georgia 31525  
[Southeastbaptistassociation.com](http://Southeastbaptistassociation.com)

[Missiontrippin@hotmail.com](mailto:Missiontrippin@hotmail.com)  
office: 912-264-6277  
toll free: 877-928-9200  
fax: 912-264-9462

## Table of Contents

Coastal Georgia Information.	3
Who Are We?	4
What Is Resort Ministry?	4
Find Ways to Connect with People	5
Block Parties	11
General Policies	12
FUN Camps	17
Performance Ministry	21
Beach Ministry	23
Face Painting/Balloon Sculpting	25
Other Ministry Options:	
Nursing Home	28
Prayer Walking	28
Pier Ministry	28
Forms	29
Medical Facilities And Other Places.	35
Conclusion	35
Contact Names & Numbers	36
Evaluation	37
Child Protection	38
Notes	39-40

***Golden Isles Ministries desires the best mission experience for your mission group. We have adapted many resources from across resort ministries in North America to provide you an effective resource notebook to equip you for a great mission trip to the Golden Isles of Georgia!***

## Coastal Georgia information

The Georgian savannahs fall away southward from the Carolinian low country. Pioneer wiregrass and Georgia backwater courses heartily along the pine and oak draped riverways of the mighty Altamaha, the Big Satilla, Little Satilla, and the St. Marys rivers. Meandering via the low country waterways, converging streams rush to meet the shimmering Atlantic. Coastal Georgia encompasses coastal barrier islands, towns, resort life, tourism, arts, historical, cultural events, and recreational activities. Brunswick stew, shrimping, shipping, history, live oaks, palm trees, and hospitality all define the international port city of Brunswick, gateway to Georgia's Golden Isles.

Founded in 1771 on Gen. James Oglethorpe's Savannah plan of grids and squares, Brunswick today reflects its English heritage in the names of her streets and squares - Prince, Newcastle, Gloucester, London, and Halifax. Brunswick is pure South - wide boulevards sheltered by towering oaks, stunning Victorian homes and modest bungalows. Possessed of a mild climate and laid-back attitude, the marshes of Glynn have inspired the poetry of Sidney Lanier, the writings of Eugenia Price, the blockbusters of Bill Diehl. Downtown Brunswick is part of Brunswick's Old Town National Register District. Established on the natural bluff over Oglethorpe Bay, today it remains the governmental and commercial heart of the city. Shrimp boats at sunset, historic buildings, and Southern hospitality abound, awaiting your visit to Georgia's Golden Isles.

St. Simons captivates visitors with remarkable beauty and fascinating history. lovely beaches, 99 holes of golf, tennis, and countless shops and restaurants. Historic remnants of bygone eras, including Ft. Frederica and the sites of antebellum plantations, dot the Island. Treasures are found around every bend on this island, the largest of The Golden Isles.

St. Marys is another of the many historic locations along the Golden Isles of Georgia. Nestled between Brunswick, GA and Jacksonville, FL, it is a landmark of coastal heritage and history. It has roots in Colonial times and natural landmarks such as the Okefenokee National Wildlife Refuge and Cumberland Island

# Who Are We?



Golden Isles Ministries (GIM) is an evangelistic effort of the Southeast Baptist Association designed to reach out to people across the Golden Isles of Coastal Georgia: Brunswick, St. Simons Island, Jekyll Island, Kingsland and St. Marys.

Golden Isles Ministries exists to provide opportunities to share God's love (the Great Commandment) and His message of the Gospel (the Great Commission). GIM is a ministry of Southeast Baptist Association, it's churches, it partners with various ministries and service organizations to give volunteers a "positive, life-changing missions experience."

*Our goal is to "glorify God by meeting needs through selfless service."*

## What is Resort Ministry?

Resort ministry is simply doing ministry in resort areas where people come to play and relax. Resort ministry enables Christians to share the gospel with those at leisure. In order to share the love of Christ in a world at play, we must use everyday language to meet people where they are.

Creative tools are used in the resort setting to present the living Christ. We should remember that resort missions is much more than just having the tools--day camps, music, puppets, clowns, drama, recreation, and so on. It is using these ministry tools to earn the right to speak with people about the reason we are here – Jesus Christ!

We target the unchurched and present a vibrant, alive Jesus. We are sensitive to where a person is in his or her spiritual journey and faithfully share with them the love of God through His Son, Jesus Christ. We should leave them with enough information without overloading them with too much. Some people will come closer to Him through this type of ministry. Others may not want a relationship with God at the time, and we respect that.

# Find Ways to Connect With People

The primary focus of your ministry will be finding ways to connect with adults, youth, and children in order to earn the right to speak to them about Christ. Your group members need to practice saying their testimony in one minute or less using language anyone can understand. Be careful not to lead people to express commitments to God that are not real as confusion may result and interfere with their spiritual life.

## Consider The Person's Background

As you share Christ, consider the family and religious background of the person to whom you are speaking. Learn about this by asking general questions about their family. Ask open-ended questions, avoiding questions that may be answered with a simple yes or no. Is there any background on which to build a commitment to Christ? The Holy Spirit will use an individual's circumstances to draw them to Him, no matter how "good" or "bad" they seem to us.

## *Connect Through Family*

- >Tell me about where you are from.
- >Tell me about the community where you live.
- >Tell me about your family.
- >Tell me about your children.
- >Tell me about your special hobbies.

## *Connect Through Common Interests*

- >Tell me about the sports you like.
- >Tell me about any good books you have read, movies you have seen, computer games you have played, or television shows you have watched
- >Tell me about what you do for a living.
- >Tell me about the church you attend.

## Use Everyday Language, Not Church Language

Language is another important consideration. As Christians, we use words like sin, saved, lost, heaven, hell, repent, and atonement. Many people will have problems understanding these words. For example, the idea of letting Jesus come into your heart may conjure a picture in a child's mind of cutting open your heart and trying to stuff Jesus inside, or an adult might think of Baptism as washing away dirt from their body. In addition, people pick up words and incorporate them into their vocabulary without actually understanding their meaning. Be careful to talk to people on their level of understanding.

## Keep These Things In Mind

Be intentional and relational. Form a relationship before sharing your story.

Involve the person and allow them to open up to you.

Make a commitment to love the person whether or not they ever come to know God. Remember they are a person not a project.

Listen first – People need to know you are interested in them and not just interested in talking about yourself.

It is more important to form a relationship than to get through sharing your story. It may take numerous conversations before they are ready to have a relationship with God.

Don't allow fear to keep you from entering into spiritual conversations or from asking the person if they would like to know God personally. At some point you will want to make the transition to spiritual matters.

## Make The Transition To Spiritual Matters

### *Exploratory Question # 1*

Tell me about the person who has had the greatest impact on your life.

This question is important because it begins to form a relationship between the presenter and the person by finding out what and who is important to them. The answer given will invariably focus on a relationship, setting the stage for introducing them to how much God wants to have a relationship with them as well.

### *Exploratory Question # 2*

How has God had an impact on your life?

Their answer will give you the opportunity to discover what, if any, religious background the person may have. Thank the person for sharing with you and then take the time to share your story.

### *Tell Your Story*

Telling others what God has done in your life brings glory to God. That is true even if those we tell are believers already. Practicing some principles is helpful in preparing to tell your story.

## Remember These Things In Preparing Your Story

- >Your story has authority.
- >Your story communicates.
- >Your story relates
- >Your story is very important.
- >Keep it short and simple.
- >Keep it to the point.
- >Give adequate details.
- >Avoid bragging and negative remarks.
- >Don't use "church words".
- >Avoid telling your story as canned presentation.
- >Relive your story and present it from the heart.
- >Ask yourself, "If I were hearing this story, what would it mean to me?"

## Write Your Story

(Use the questions below to help your mission group volunteers write their story before coming on the mission trip)

### **My Life before Receiving Jesus**

- >Consider your religious background.
- >Were you born into a religious or a non-religious home?
- >Were you concerned with what happens when we die?
- >Were you experiencing a crisis?
- >Did you ever think about the meaning of life?
- >Did you ever wonder if this is all there is?
- >Was everything going good, but something was missing?
- >How did you realize you were not in a strong relationship with God and on the wrong track?

---

---

---

---

---

---

---

---

---

---

## How I came to know the Lord

- >Did someone speak to you privately?
  - >Were you reading the Bible?
  - >Were you watching television or listening to the radio?
  - >Were you wondering if there was a God?
  - >Were you attending a church service?
  - >Was it the result of a series of events?
  - >The turning point in my life came when?
  - >I decided to make a change in my life after?
  - >I discovered God when/or through?
- 
- 
- 
- 
- 
- 
- 
- 

## How Jesus Impacts My Life Now

- >How has He given me peace?
  - >How has He helped me take away my fear of death?
  - >How has He helped me improve my marriage?
  - >How has He helped to give me a new purpose for life?
  - >How has He helped change my heart, my mind, and my priorities?
  - >How has He helped remove my anger, pride, past hurts and fears of rejection?
  - >How has He helped me take on a new identity?
- 
- 
- 
- 
- 
- 
- 
-

My Story:

---

---

---

---

---

---

---

---

---

---

## Pay Attention To Their Questions

Questions are important to spiritual development and may or may not indicate a person is ready to accept Christ. Take time to understand just what it is the person is asking and then answer simply and briefly. “What do you mean?” “What makes you say that?” “Tell me what makes sense in what we have been talking about.” “Tell me about your willingness to ask God to be in control of your life right now and do the right thing.”

Children are prone to say what they think older persons want to hear and are very capable of memorizing the right answers. As you encourage persons to express their feelings and thoughts in their own words, you will be able to better understand their level of thinking, and the person will begin to clarify what he really does believe.

**If a decision is made, add their name to the *Ministry Tracking Form*. If the person has a home church, please include that information.**

## Pray with Them

Dear God, thank You for loving me and making me so special. I believe that You sent Jesus to earth to take away my sins so that I can live with You forever in Heaven. I'm sorry for the bad things I've done. Please come into my life and help me live for You. Amen.

## Prepare for the Unexpected

- >Evolution vs. Creation
- >God's Existence
- >The Deity of Jesus Christ
- >Other Religions

It is important to keep in mind that we do not need to have all the answers. God does not expect us to know it all, but to be **obedient**.

*Additional Notes:*

---

---

---

---

---

---

---

---

---

**Don't forget, EVERYONE has a STORY to TELL!**

# Block Parties

An evangelistic block party is a fun event provided for the community to reach them with the gospel of Jesus Christ. It is designed to catch the attention of the residents by appealing to their interests, tastes, and curiosities. It can be a platform to establish trust, build relationships and share the gospel. There are three main areas you should focus on when planning your block party:

- **Evangelism**  
You should choose individuals whose sole responsibility is one-on-one contact with the people in attendance. These people should be trained in sharing the gospel. They should be friendly, outgoing and able to start conversations naturally.
- **Activities**  
Be sure to bring adequate sound equipment for music, contests, stage events and any other activities you may be planning. Some ideas could be: face painting, child identification, games, clowns, carnival games, door prizes, snow cones, popcorn, and cotton candy.
- **Refreshments**  
The aroma of food should heighten the desire to join the fun! The menu should include picnic type food. Can drinks are a must!

**Visit:**  
[https://admin.na3.acrobat.com/\\_a826515135/blockparty](https://admin.na3.acrobat.com/_a826515135/blockparty)  
**Evangelism Resource**  
**“How To Host An Evangelistic Block Party”**



# General Policies

Groups provide their own materials and transportation to and from ALL ministries. You must be able to provide transportation for your group to your ministry sites.

Arrive early at all ministry sites and activities. Anticipate setting up equipment for ministry. Register everyone at all ministry settings. This greatly helps the follow-up process. Please bring these records to the GIM Office at the end of the week. Secure the name and address of any individual who makes a decision for Christ, so we can connect that person with a church. An added benefit of working with the Southeast Baptist association during your mission experience is for proper discipleship and church assimilation of the individual(s) after your mission group leaves.

All ministries must be non-denominational in nature. This means that groups are not to proselytize for their particular denomination. Alter calls/ invitations are not allowed. People should be invited to talk after the ministry activity with GIM staff, missionaries, or your mission group volunteers about establishing or developing their relationship to Christ. All decisions should be recorded on the *Ministry Event Tracking Form*.

Please remember that at GIM the key word is FLEXIBILITY. We work hard at trying to have all the details arranged prior to your arrival. However, sometimes there are delays and interruptions. We encourage you to lead your participants to use these interruptions to see what God is doing around you. Flexibility is crucial to a positive missions' experience. Mission group leader and chaperones: Your attitude will be interpreted and carried by your mission group participants.

Train and prepare your participants thoroughly! Make sure they come to serve and work. It is not time for a vacation!

When problems arise at the ministry site, please work with your missionary. Please do not have disagreements in front of the residents, tourists or your mission group participants. Remain calm and cool.

# GIM Name Badge and T-shirt

Each registered participant will receive one GIM name badge and one t-shirt. The name badge should be worn by all participants affiliated with GIM during ALL ministry activities. The t-shirt is only required during the FUN CAMP ministry. This will help ministry site personnel to recognize you and so there will be no question as to your permission to be present on property. The badge will also generate questions such as, “Who are you?” and “What are you doing?”

In knowing the information above, you will be able to use the badge and t-shirt to share with people about the relationship you have and that they can have with Christ. GIM has developed a reputation of integrity and caring. We anticipate your help in advancing this positive recognition. If you lose your ID badge, it will cost \$3 to purchase a replacement. Additional t-shirts can be purchased for \$10 each.

## Dress Code

The following policy has been established for ALL those who serve with Golden Isles Ministries. We feel this is the best way to present ourselves while we are serving at any ministry site.

### ***Policy for females:***

#### *Casual clothing guidelines*

- T-shirts are acceptable except those with *questionable logos* (i.e. alcoholic beverage ads, profanity, etc.)
- Sleeveless shirts are acceptable as long as they have wide width straps. Halter-tops and spaghetti straps are not acceptable
- No bare midriffs; if low rise pants/shorts are worn, shirts **MUST** be tucked in
- Shorts **MUST** be mid-thigh in length
- Jeans and Capri pants are acceptable
- **Closed-toe Tennis Shoes** must be worn at all ministry sites (except for beach activities)
- Caps are to be worn to shield the sun rather than sunglasses
- Shirts must be worn over swimsuits at beach ministry sites and when going to and from a pool
- **One-piece bathing suits only**

## **Policy for males:**

### *Casual clothing guidelines*

- Shirts must be worn at all ministry sites
- T-shirts are acceptable except those with *questionable logos* (i.e. alcoholic beverage ads, profanity, etc.)
- Sleeveless shirts are acceptable, but not cut-off shirts **(Do not cut the sleeves off the GIM t-shirts!)**
- Pants must be worn around the waist not hips
- Shorts of mid-thigh length are acceptable
- Jeans are acceptable
- **Closed-toe Tennis Shoes** must be worn at all ministry sites (except for beach activities)
- Caps are to be worn to shield the sun rather than sunglasses
- Shirts must be worn at beach ministry sites with swimsuits and when going to and from a pool
- Swim trunks of mid-thigh length are the only suits acceptable

## Behavior

EVERYWHERE IS A MINISTRY SETTING! If a group or individual breaks the rules or offends someone we are attempting to share the Gospel, our ministry is damaged.

Please remind your mission group volunteers that we have negotiated and made arrangements with the management and leaders of the communities in which you minister. *Their rules . . . no matter how inconvenient . . . must be followed.* You are a representative for your church, GIM, and most importantly, Christ. Actions and attitudes should be consistent with His teachings.

PDA, public displays of affection, such as holding hands, etc. may distract from what we are trying to accomplish! We are here to meet the needs of others and not our own. Drugs, alcohol, or tobacco products may not be used. To keep sun out of the eyes, wear ball caps. No sunglasses are to be worn during ministry activities so that clear eye contact can always be made.

## Once you arrive. . .

**Arrive in time** to check in at your mission group's lodging and get settled **before** you check-in at the GIM office at the Southeast Baptist Association

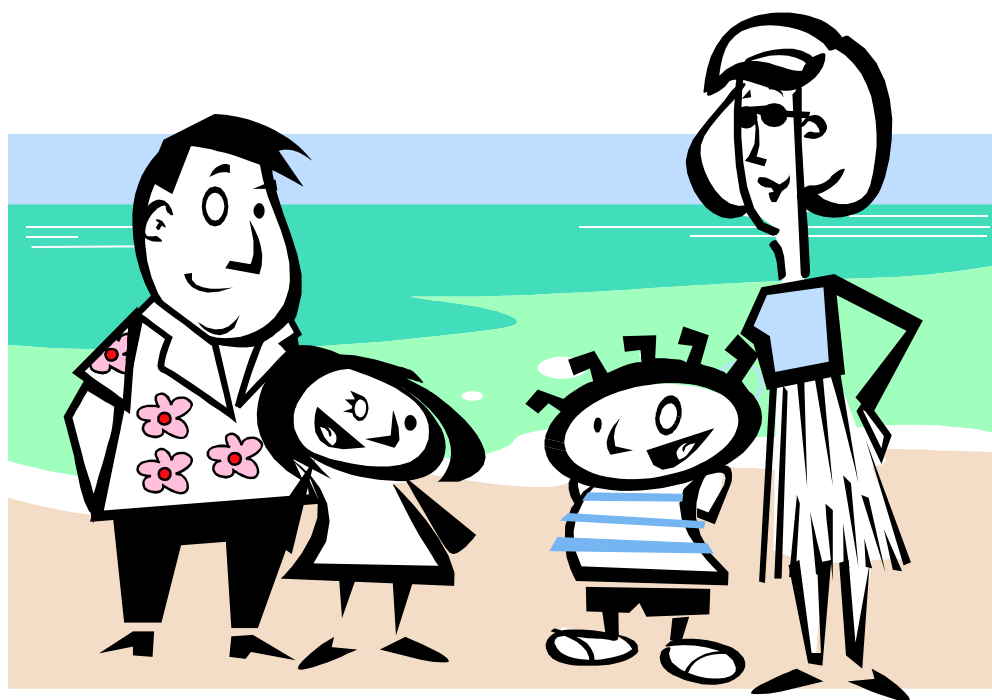
When you register, you will be able to:

- pick up your T-shirts, Name Badges and Slip Discs
- pick up your *Mission Group Local Information* form and fill it out so we will have *local* phone numbers and information on your group while you are here.

Maps to your ministry site will be in your registration packet.

If you are late in arriving, please call the GIM office 912-264-69277 and let us know your expected time of arrival.

# MINISTRIES



# FUN Camps

**All FUN Camps** are conducted in designated locations Monday through Friday, from 4:00 PM – 6:00 PM. They are for children ages 4 – 12. Plans should be made to divide the campers into at least three age groups. Try to plan creative ways in which they may be involved.

*Ministry begins when the first child arrives*, even if it is before the advertised starting time. Therefore, have some group members ready with activities to do with the children before FUN Camp begins.

FUN camps **must** include a Bible lesson, and may also include music, games, crafts, and recreation. Drinks and snacks should be served during break time.

Groups are responsible for providing all FUN Camp materials, craft supplies, refreshments, and publicity. (**Bring** balls, sidewalk-chalk, Frisbees, etc.)

Youth are capable of leading all phases of FUN Camps and are encouraged to do so under adequate adult supervision. **Over-planning and flexibility** are essential to the success of FUN Camps for campers and groups. In this setting, evangelism needs to be one-on-one. It is imperative that no undue pressure is put on any child. You are seed planters!!!

For effective communication to all of the children, place them in groups according to age and grade and tell age-appropriate stories from memory. Use variety in your presentations by including puppets, clowns, skits, etc. in order to keep the children interested. You can also use songs that relate directly to the story for further reinforcement.

Safety is of utmost concern when conducting FUN Camps. Make sure that all games and recreation are safe and able to be well-monitored and controlled. **We do not allow the game “Red-Rover” to be played or “earth balls” to be used.**

## Tell Children the Story of Jesus

Present the story of Jesus and His love so children will have time to think about it and ask questions. Telling the story in small groups will create an atmosphere more conducive to discussion. At the conclusion of the story, tell them that one day God will help them know when it is time to make a commitment to Him. **DO NOT HAVE THEM BOW THEIR HEADS AND RAISE THEIR HANDS, OR RESPOND TO ANY TYPE OF INVITATION. LET THEM COME TO YOU ON THEIR OWN.**

When a child approaches you wanting to accept Christ, take time to ask questions and listen to them, assessing their background, level of understanding, and needs. Children sometimes approach you because they are starving for one-on-one attention. A child may simply want to pray a prayer of love and thanksgiving for Christ, or they may be ready to accept Christ. If you feel the child is not ready, do not be afraid to explain the magnitude of their decision and that you feel he should learn and understand more about God before making the decision. Help the child express his feelings to God through prayer. After praying, talk with the child about what has taken place.

### Avoid Pressure Tactics

Keep the leader to child ratio low. It is easy for children to feel overwhelmed when more than one or two leaders are dealing with them about a decision. Focus on the relationship we are to have with Christ in life rather than dwell on the explicit details of His death. Salvation is more than going to heaven or hell. Although we must keep records, do not measure your work in numbers. It is unlikely that a child who comes to a ministry site with no previous exposure to spiritual truth will be ready to grasp the meaning of the Gospel by the end of the week. The significance of your work may not be evident until later.

### Curriculum

Groups are responsible for obtaining and planning the FUN Camp curriculum. Groups can use adapted Vacation Bible School material, base each day on a biblical figure, or use another creative way to introduce Jesus to the children. Please remember that what works in your church may not work with those outside the church. *We ask that you not to use the current year LifeWay VBS material to avoid repetition of the same theme from week to week for the children.* A helpful web site is [www.missionarlington.org](http://www.missionarlington.org).

### Daily Publicity

To promote your FUN Camp, ALL group members must wear their ID badge and GIM T-shirt at all times. Each day, encourage children to invite their friends and siblings to attend FUN Camp the next day.

When your group arrives on site each day, while some are setting up for FUN Camp, other group members should be out publicizing the FUN Camp. Anyone in sight can be invited. ***Participants must not confront campers or apartment residents in the privacy of their property, unless by personal invitation.*** You may distribute interest flyers that include basic facts. Use creative ways to attract attention such as clowning or singing songs.

At times, there are some FUN camp ministry sites that will want the flyers beforehand for distribution by the office of management.

## Working With Children

Assign group members to monitor all children so no one wanders away. Plan ahead for ways to deal with special needs and rowdiness. Plan smooth, quick transitions from one activity to the next. TWO mission group volunteers or leaders should ALWAYS accompany children when walking to a public restroom. At the conclusion of Day Camp each day, younger children should wait for parents to pick them up or be accompanied to their campsites or homes by at least two group members.

## KEYS TO GOOD DISCIPLINE

- < Be positive with your suggestions instead of always responding with “do nots”.
- < Be encouraging instead of always fussing and criticizing.
- < Have fun with the children.
- < Move quickly from one activity to another, so there is no time for misbehavior. Recognize when an activity is not working and be willing to shift the way you are leading it. You may just need to move to another activity
- < Have a variety of activities (quiet, active, small group, large group, individual). Keep them busy!
- < Identify the needs of children and express love in the way they need it. Be careful and teach your participants what is proper touching.
- < Talk individually with children about problems. Be friendly but firm.
- < Praise Good Behavior!

## DEALING WITH BEHAVIOR PROBLEMS

- < Deliberately ignore misbehavior that can be tolerated. If a child continually interrupts during the Bible story, do not acknowledge that he has spoken. Don't even look at him. When he realizes you won't answer, he may stop.
- < If ignoring doesn't work, look at the child in a way he knows you mean business.
- < If there is another worker, have them move next to the child and touch him. Sometimes this will satisfy their needs.
- < Talk to the child in private. Let him know that you are glad he is there, but he must change his behavior. Yelling never works.

< Love on the child as much as possible. Usually misbehavior is a result of home problems. Try assigning one worker to work one on one with him or to be with him at all times in group activities.

< If two children get into a physical fight, do not step in between them. Get two workers to step behind the children and at the same time, give them a big bear hug around their arms and waist to contain them.

< If all else fails, take them home and talk with his parents. Let him explain his behavior while you are standing there. Explain that, because of his behavior, he could not stay, but that he is welcome to come back when he can behave properly.

## Crafts

Crafts can be an effective way of introducing Christ to children. Have all parts of the craft pre-cut and ready to be assembled by the children. You can use crafts that relate to the day's Bible story or that double as the day's snack. Please avoid using very light-weight materials as they have a tendency to blow away in the wind. Be sure to bring all materials needed for each craft, as well as any items needed for **clean-up** and actually 'do' clean-up!

Because salvation bracelets are simple to make and lay out the plan of salvation so clearly, they are a popular craft. However, there are many variations of salvation bracelets. **In order to offer the most clarity for children who may attend multiple day camps, we ask that you use this standard salvation bracelet:**

1. Knot—this knot stands for the sin in our lives that keeps us separated from God (Things we are “KNOT” supposed to do).
2. Red—the red bead stands for the blood that Jesus shed on the cross to forgive us of our sins.
3. White—the white bead shows us that our sins are made “white as snow” because of the crucifixion.
4. Green—the green bead stands for the growth that occurs in our relationship with God as we read our Bible, pray, and go to church. These are the “sunshine and water” of our relationship with God.
5. Yellow—the yellow bead stands for God's promise of eternal life, living in heaven with Him when we die, for those who understand and accept Jesus as their Lord and Savior.

Clear—ask the person, “Is all that I explained to you clear?” This keeps you accountable to following through with the presentation, as well as making sure the person understands what you just said.”

## Performance Ministry

*\*If your group is planning to participate in the performance ministry area, you **MUST** submit a preview tape or video e-mail to the GIM office **3 full weeks before you arrive**. This tape should contain a 20-30 second clip of all songs and/or other performance areas of your show.*

Performance ministry takes place in resort venues (in the form of a Family Evening Program), local stages, or local churches. They can consist of vocal/instrumental music, puppets, clowns, solos, duets, ensembles, illusion, mime, comedy, drama/interpretive movement, and sign language.

Variety is the key since audiences will range in age from children to senior adults. Programs can be developed along a theme such as God's love, light, patriotism, friendship, the ocean/beach music, etc. **Unfortunately, story lines will not work.** Audiences come and go, particularly in shopping complexes. People who come in the middle of the program may lose interest and leave because they cannot follow a story line. **Musicals are allowed only in local churches, or in places approved by GIM only.**

Performances in resort venues should consist of two or three 20-25 minute programs. This time length is to accommodate the ever-changing audience in this setting. The programs may use the same material each time, if you wish, or you may use two different programs. A program including both Christian morals and popular music is required to attract and be recognized by the unchurched. There is a great selection of non-Christian music that aligns with Christian morals and contains good "crossover" messages. The content of these programs consists of 70% non-Christian music and 30% Christian music. **Praise & Worship concerts don't work in this setting!**

When planning the closing to the program, try to make a smooth transition so that the performers can mingle with the guests for personal witnessing. Plan to conclude your program with your group dispersed among the crowd and ready for relational evangelism. All of these programs should be concerned with relating the message of salvation to the audience. **But you cannot give an oral testimony or spoken word presenting the gospel in any way to the audience.** We are providing entertainment. Maintain vitality throughout the program, portraying Christianity as enjoyable. Plan carefully and prayerfully in order to reach those who come your way.

The sale of tapes/CDs/DVDs is prohibited.

While the program is, in itself, a witness for Christ, plan on taking advantage of the opportunities to share the Gospel and a personal testimony before and after the program IF guests have questions. Show that God is alive, active and powerful throughout your program through facial expression and enthusiastic choreography.

## Equipment

Plan for weather variations. Most performance areas are not sheltered. Sound systems must be loud enough to overcome wind, waves, and other distractions. Using windscreens on microphones is essential. Be sure to bring plenty of outdoor-quality extension cord. Groups must provide their own musical instruments/amplification system. You may use risers if you wish, but space for movement and choreography is essential to keep the audience's attention. The use of props helps as well. They need to be simple and weather-resistant. Be sure to arrive early to set-up.

## Helpful Hints for Performance Ministry

Plan for audience participation (contests, "sing-alongs," etc.).

Plan for the group to be among the audience sometime during the program and at its conclusion (this is when evangelism takes place).

DO NOT distribute tracts, unless you are in a personal witnessing situation.

Give-aways are an audience pleaser. Suggested items are lollipops, small gifts or something which is unique to your area of the country; small flags around 4<sup>th</sup> of July

A "Master of Ceremonies" can be fun for the crowd and group.

Avoid individual introductions, or lengthy verbiage.

Costumes need not be elaborate, but creative.

Memorize all parts of the program.

Arrive early for set-up.

Bring plenty of outdoor-quality extension cord.

Wind screens for microphones are essential.

Props need to be simple, quick to assemble and disassemble, and resistant to wind and rain.

Do not use religious jokes or denominational parodies.

Practice sharing testimonies WITHOUT using “churchy” words.

Show that God is alive, active and powerful throughout your program through facial expression and enthusiastic choreography.

Be professional, and provide family entertainment.

Witness corporately and especially one-on-one.

Have fun!!!

## *Beach Ministry*

Beach Ministry takes place from 10am-noon / 2-4pm / 6-8pm, Monday through Friday, in assigned areas of the beach. You may choose to pack a lunch and stay longer into the afternoon before returning to your housing location to prepare for evening ministry, but that decision is yours.

Ministry on the beach is probably the toughest ministry in Golden Isles. First of all, the type of people you will be working with range in age from toddlers to senior adults. Be prepared to minister to all ages. Another factor is that the people you see on the beach on Monday might not be the same people you will see on Tuesday. Be prepared for a diverse group of people.

Occasionally you may have an activity planned but no one on the beach wants to be involved. To help avoid these obstacles, you will find below some ideas that we suggest for you to have an effective ministry while on the beach.

Remember, you are not out there to force the name of Jesus on anyone. You are out there to meet the needs of people and earn the right to share Christ with them.

While participating in beach ministry, your group should actively invite others to participate in games and intersperse newcomers into each team. Get to know people while you are playing and have refreshment breaks. This is the opportunity to tell people why you are here. Beach Ministry requires deliberate planning with **MATURE** groups in order to remain focused while in such a beautiful, exciting, and distracting environment. The goal is to share the Gospel creatively while having fun.

**NO SOLICITATION IS ALLOWED ON THE BEACH-- ANYWHERE OR ANYTIME. Distributing tracts or other paper items randomly is PROHIBITED and ILLEGAL.** However, after a conversation is built with an individual, think of creative ways to share the gospel other than the use of tracts, such as salvation bracelets or Slip-Discs.

## Sand Sculpting Contests

Invite family groups of all ages to enter a sand sculpting contest enabling your group to make contact with large numbers of people on the beach. A time limit should be set. (About 45 minutes allows for some pretty elaborate structures.) Both youth and adults can use this construction time to develop friendships with contestants. Prizes are optional. Use this time to evangelize. Be creative! You may want to construct sand sculptures with a spiritual meaning.

## Slip Discs

Everybody on the beach has either played or has watched someone else play Frisbee. Slip Discs are Frisbees with a message – the message of Jesus. The disc first instructs the thrower how to make the disc fly right. Then, it explains to the individual how to make his life fly right. They are tracts that will never get thrown in the trash. One Slip Disc may lead many people to the Lord.

## Give Aways

Initially, people may be reluctant to accept give-aways because “nothing is free anymore.” Provide special items for particular groups. When asked why you are giving away these items, be prepared to explain. (Address this with your group in training events.) Suggestions are:

For Pier: band-aids, chapstick, and sun block samples

For Beach-goers: sunscreen, suntan lotion, sun visors, and beach toys

## Kiting

Using kites is a great way to meet people on the beach. They can be crowd drawers or you may choose to purchase kite kits and let the kids build and decorate their own kites.

## Volleyball




Volleyball with a purpose makes for quick friendships and evangelistic opportunities. While a few members remain behind to set up the net, other members should canvass the beach inviting people to play. A strong effort should be made to learn the names of these new friends. When the game begins, make sure you have your members on both sides of the net. Never let the game be your group against the people you invited. Take a break occasionally for a cold drink of water or lemonade. Use this time to strike up conversations about anything. Look for ways to share Christ with these people. **It is imperative that you put on T-shirts and take off sunglasses when talking to people.**

# Face Painting/Balloon Sculpting

Face painting and balloon sculpting are fun and creative ways in which to share Christ in a variety of settings. When participating in a face painting/balloon sculpting ministry, always take time to talk to the children. Share a Bible story with a child while painting his or her face or tying a balloon. Relate a solid, Biblical principle to the artwork that you are painting or balloon you are tying. Encourage your students to perform the artwork, while the chaperones are sharing with the adults. Help your captive audience to hear the Truth of the Gospel!

**Be sure to write “Jesus Loves (fill in the child’s name)” on each balloon sculpture.**

Venues where face painting & balloon sculpting are great:

-  While part of your group is setting up for an evening program, others can paint the faces of children passing by.
-  After a child registers at Day Camp, he or she can play with a balloon animal made just for him or her.
-  Malls & Block Parties

## Face Painting

*Types of Paint - Use ONLY non-toxic paints*

- Grease Paint – Clown make-up. A kit costs \$5 - \$10. Kits can be purchased at clown supply stores, magic shops, specialty shops, or make-up supply stores. Basic colors of red, blue, green, yellow, white and black are a good starter kit. Once make-up is applied, it must be powdered with baby powder to set properly. Otherwise, it will smear if touched. Grease paint must be removed with baby oil or cold cream.
- Acrylic Paint – Kits cost \$3 - \$6 and can be purchased at any craft store in a variety of colors. They are easily applied, quick to dry and removable with soap and water.

*Brushes*

- A variety of brushes can be used depending on the design desired. Very inexpensive brushes can be as suitable as expensive ones. A medium quality brush is probably best. For convenience, it is recommended to use one brush per container of paint. Or, use a paper plate as a palette and put a little of each color on your plate. Rinse brush in a cup of water and blot on a paper towel before using a new color. Clean brushes at the end of the day with soap and water or cold cream/baby oil as appropriate.

## Designs

- **Offer only a few designs**, especially if there are a number of children waiting.
- Keep designs simple.
- Use the time to share God's love.
- Show designs on a poster. Plastic menu covers also work well.
- Rainbow – tell the story of the first rainbow and the promise God made. Talk about promises, God and how He cares for us.
- Heart – talk about what a heart means – love. Talk about Jesus and His love for us.
- Flower – talk about how God makes flowers, and how each flower is different and beautiful, and how He makes us each different and beautiful.
- Star – talk about the bright star that led the shepherds to Jesus. As the star showed them the way to Jesus, we as Christians are to show others the way to Jesus.
- Boat – tell about Noah and the Ark. Also, tell about Jesus calming the storm and walking on the water.
- Fish/Whale – tell about Jonah and the big fish and how God desires for us to obey Him.
- Cross – tell about the crucifixion and resurrection of Jesus and how we can accept Him as our Savior.

**Be creative and use your imagination!**

## Items Checklist For Face Painting Sites

- Paper towels
- Paper plates
- Drinking Water
- Suntan Lotion
- Cups
- Poster of Examples
- Stamps
- Stickers
- Mirrors
- Paint Brushes
- Card Table
- Chairs
- Imagination
- Love
- Water in Small Tupperware Bowls For Rinsing Brushes

## Balloon Sculpting

*Do not give young children balloons without the permission of their parents.*

It is important to bring something different to give very small children (2 and under) because a child can choke on bits of a popped balloon. Items such as stickers are appropriate.

When inflating a 260 balloon, be careful not to pull hard when stretching the balloon before inflating. Pulling too hard and/or too many times will cause lumping.

If many sculpturing balloons burst while being used, check to see if balloons are receiving proper care: A) Stored in air-tight containers; B) Stored at an even temperature, not subjected to extreme heat or cold. Also, make sure hands are clean of any citrus based lotions. Citric acid will cause balloons to burst. If breakage is continual, you may need to change suppliers.

To keep balloons fresh and dry and to prevent excessive squeaking, dust them with a little talcum powder. Powdering the hands helps guard against moist palms and fingers. To prevent undue squeaking, release a small amount of air from the balloon before tying off.

Parents have occasionally had near-emergencies due to a child swallowing a piece of balloon. You may be liable. Also, small children may be fearful and reluctant to receive the balloon. Hint: Give the balloon sculpture to the parent who can in turn give it to the child. **NEVER** allow a child to have a balloon that is not inflated and **NEVER** allow them to blow up the balloon.

Some people may fear the noise of balloons bursting. Before distributing balloons, make a sculpture, or play with a sculpture made earlier. Note which individuals express apprehension. Ask if they would like to have one and be careful not to sculpt near them.

When making sculptures for a group of children, they may beg for the sculptures made from two or more balloons to the exclusion of the one-balloon sculptures. You may want to require the child to earn the special balloon. For example, have him correctly quote a few of the Ten Commandments - depending on their age.

Then writing/drawing on balloons, the marker will sometimes bleed, smear, or bead up. Only use permanent markers with tapered points such as Sharpies.

Where to get Balloons and Face Painting Supplies:

[www.balloonhq.com](http://www.balloonhq.com)

[www.tmyers.com](http://www.tmyers.com)

[www.snazaroo.com](http://www.snazaroo.com)

[www.professorwonder.com](http://www.professorwonder.com)

# Other Ministry Options

## 1. Nursing Homes

A large portion of Golden Isles's population is made up of senior citizens. Some have lived here all of their lives, while others have retired to the area. There are several ways in which to minister to those who live in nursing homes: just simply visiting with them and talking – some of them often have no one to talk to for days, leading in games, or providing musical entertainment. You can also perform puppet shows or have sing-alongs.

### Schedule:

All nursing home/adult day care ministries take place in the morning, but specific times vary from location to location. Please consult your ministry contract for details.

## 2. Prayer Walking

As you walk the streets of Golden Isles, let the Holy Spirit guide your prayers for the people in the homes, churches and businesses you pass. Let Him open your eyes to their needs, seeing them as He does, showing you how you can minister to those needs. Use a snack or drink offered in the name of Jesus to gain you entrance into their space. Ask the person about their needs and offer to pray with them. Some may refuse . . . pray for them after you leave. Most, however, eagerly ask for prayer . . . for someone to show they care. The Holy Spirit will show you whose hearts He has prepared for harvest, and you'll have the opportunity to share the love of Jesus and the Good News of His saving grace. The South Carolina Baptist Convention has a great presentation about Prayer Walking on their web page:

[http://images.acswebnetworks.com/2013/1271/Prayerwalk\\_Guide.pdf](http://images.acswebnetworks.com/2013/1271/Prayerwalk_Guide.pdf)

## 3. Pier Ministry

At the "Village" on St. Simon's Island you'll see a popular pier with plenty of fishermen. Feel free to give out band-aids, chap-stick, and sun block samples while you talk with them about their story. Allow the conversation with them to become an opportunity for you to share your testimony. You may have your mission group prayer-walk the area around the pier before even going on the pier.



Again, these are only ideas. There are many other possibilities which would be more specific to each pier. Our goal is to meet the physical needs of anyone associated with the pier, which leads to opportunities to meet their spiritual needs.

# Forms

There are several forms that you will be responsible for filling out and returning to us BEFORE you arrive or upon your arrival:

## ❖ **Covenant Forms**

This is considered a contract between your group and GIM. This form indicates your willingness to abide by Golden Isles Ministry's policies and procedures. It also sets forth your groups specific ministry schedule and your commitment to it. After consulting with the Group Coordinator about your schedule at the pre-project training, your covenant form will be mailed/e-mailed to you. Please sign return, 3 weeks before arrival.

## ❖ **Medical Release Forms**

Make sure each team member has a medical release forms filled out, signed and notarized. You will need to keep this form with you at all times. Be sure each of your team members has insurance coverage.

## ❖ **Mission Team Participant List**

This form is vital to GIM in that it provides us with several bits of information. It allows us to properly order our T-shirts. Without your forms turned in on time, we may not have your sizes available to you when you arrive. This form is due in our office 3 weeks before arrival to ensure proper sizes are available.

There are also forms that relate specifically to your ministry activities that will be filled out while you are here:

\* **Ministry Event Tracking Form** This form should be filled out at the conclusion of EVERY ministry event in which your group participates. Please turn this form in to a GIM staff member before you leave for home. A sample has been included in this packet.

\* **Ministry Evaluation Form** This is to be filled out at the end of your ministry. Please turn this form in to a GIM staff member before you leave for home. A sample has been included in this packet.

\* **Decision Stat Sheet** This is to be filled out at the end of your ministry week and please turn this form in to a GIM staff member before you leave for home. A sample has been included in this packet.



# GOLDEN ISLES MINISTRIES

SOUTHEAST BAPTIST ASSOCIATION

## MEDICAL RELEASE FORM

\_\_\_\_\_/\_\_\_\_\_/\_\_\_\_\_  
Name Birth date Age Social Security No.

\_\_\_\_\_  
Street Address Home Phone Work Phone

\_\_\_\_\_  
City, State, Zip

\_\_\_\_\_  
Parent or Guardian's Name (if under 18) Mission Trip to Golden Isles \_\_\_\_\_  
Event Dates

Physician's Name: \_\_\_\_\_

Physician's Address: \_\_\_\_\_ City \_\_\_\_\_ State \_\_\_\_\_ Zip \_\_\_\_\_

Physician's Phone:(Day) \_\_\_\_\_ (Evening) \_\_\_\_\_

Date of Last Tetanus or Booster Shot: \_\_\_\_\_

List any medical conditions for which you are currently being treated:

\_\_\_\_\_  
\_\_\_\_\_

Medications currently being taken: \_\_\_\_\_

\_\_\_\_\_

List any allergies: \_\_\_\_\_

I give permission for \_\_\_\_\_ to be treated by a licensed physician if medical treatment is deemed necessary. In case of surgical emergency, I also give my consent to medical procedures diagnosed and prescribed by the attending licensed physician.

By affixing my signature below, I do hereby agree to hold harmless and indemnify Golden Isles Ministries, Southeast Baptist Association and all agents and representatives thereof (the releasees) from all claims of losses, injuries, damages, and/or death that may result in me or my child participating in the missions program of Golden Isles Ministries and Southeast Baptist Association. I further agree to waive any rights of legal action against the said releasees.

\_\_\_\_\_  
Signature Insurance Company Policy Number Date

(if under 18, must be Signed by Parent or Guardian)

Notarized By: \_\_\_\_\_ Date \_\_\_\_\_

# MISSION TEAM PARTICIPANT LIST

Please fill-in the below form with the name, grade and sex of each member of your mission team. Please indicate the T-shirt size needed for each participant. (Adult Small - Adult 4XL) Also, please feel free to use this form to make your room assignments.

Name	Grade	Sex	T-Shirt Size	Room

Name	Grade	Sex	T-Shirt Size	Room











# Ministry Event Tracking Form

Group Name					
Leader Name					
Dates of Group Ministry					
Date of the Report					
<i>Type</i>	<i>Day</i>	<i>Place of Ministry</i>	<i># Attending – Workers</i>	<i># Attending - Kids</i>	<i>Response Cards</i>
FUN Camp	Monday				
FUN Camp	Tuesday				
FUN Camp	Wednesday				
FUN Camp	Thursday				
FUN Camp	Friday				
		Average Attendance at Day Camp (kids only) =			
		Total Registered Participants (kids only)			
<i>Ministry Type**</i>	<i>Day &amp; Date</i>	<i>Place of Ministry</i>	<i># Attending – Workers</i>	<i># Attending - Kids</i>	<i>Response Cards</i>
** FEP – Family Evening Program			SPORTS – Sports Ministries		
PERFORM – Performance at mall, Broadway, etc.			OTHER – Prayer Walking, Nursing home, etc.		
BEACH – Beach Ministries					
Signature of person completing form:					
Signature of Missionary/Chaplain Supervisor:					
*****Please complete the information below and turn in at the GIM Staff Office when you check-out on Friday.*****					

# Ministry Evaluation

DATE: \_\_\_\_\_

1. Did the FALL / WINTER / SPRING mission group Notebook adequately prepare you and your group for your week of ministry? Include areas that were positive and areas we could have helped you better.
2. Did you find the Beach Ministry information relevant? Please list any areas of strengths and weaknesses you may have noticed.
3. Share the story of a life-changing ministry experience from this week for you or anyone in your group.
4. Can you recommend this ministry to other groups? What advice would you give to a group that is planning a ministry along the Golden Isles?
5. Would your group or church body be interested in establishing an ongoing ministry partnership with Golden Isles Ministries? (i.e. – coming to Golden Isles at various times throughout the year ministering in various venues).
6. Give us some advice about the FUN camps you were a part of in the afternoon.

Other comments:

Church Name: \_\_\_\_\_

Leader's Name: \_\_\_\_\_

**\*\* Please complete all the information below and turn it in at the GIM Staff Office when you leave to return home\*\***

## DECISION STAT SHEET (For Your Ministry Group)

*Attention: Group Leaders*

*Please complete the information below and turn in at the GIM Staff Office before you head home.*

### Church Group Information

Group Name
Group Leader Name
Title (if applicable)
Address
City, State, Zip
Phone
E-mail

Number of decisions made by your group:

- \_\_\_\_\_ Salvation
- \_\_\_\_\_ Baptism
- \_\_\_\_\_ Church Membership
- \_\_\_\_\_ Rededication
- \_\_\_\_\_ Commitment to full-time Christian service
- \_\_\_\_\_ Service as summer/semester missionary

Please list below the name, address and type of decision made by members of your group.

Name	Complete Address	Decision Made

## **Medical Facilities:**

### *Hospitals:*

**Southeast Georgia Health System  
Brunswick Campus**  
2415 Parkwood Drive  
Brunswick, Georgia 31520  
Phone: (912) 466-7000

**Southeast Georgia Health System  
Camden Campus**  
2000 Dan Proctor Drive  
St. Marys, GA 31558  
Phone: (912) 576-6200

### *Immediate Care Centers:*

**Glynco Immediate Care  
Center**  
15 Gable Court  
Brunswick, Georgia 31525  
(912) 466-5400  
Hours:  
Mon.-Sat. 8:30am-8:30pm  
Sunday Noon-8pm  
Open Holidays

**Glynn Immediate Care  
Center**  
3400 Parkwood Drive at  
Glynn Avenue  
Brunswick, Georgia 31520  
(912) 466-5800  
Hours:  
Mon.-Fri. 8 a.m.-8 p.m.  
Sat. & Sun. Noon-6 p.m.  
Open Holidays

**St.Simons Immediate  
Care Center**  
5000 Wellness Way  
St. Simons Island, GA  
31522  
Phone: (912)466-5900  
Hours:  
Mon.-Fri. 8:30am - 6:30pm  
Sat.: 8:30am - 5:30pm  
Sun.: Noon - 5pm  
Open Holidays

***As always in an emergency, please dial 911.***

## *Conclusion*

We are excited about your decision to serve with us along the Golden Isles and throughout our association. Our desire is that your mission group members grow in their relationships with God and develop a greater understanding of ministry through missions.

We encourage you to pray about every aspect of your preparation, travel, ministry, and return from the field. We acknowledge the fact that only God has the ability to change hearts and lives. Our prayer is that you will experience His fullness and joy in every facet of being on mission here.

Thank you for caring enough to prepare and perform ministry here. Please feel free to contact us at any point with questions and comments.

See you along the Golden Isles!

# Important Contact Names & Numbers

## Golden Isles Ministries

Southeast Baptist Association Office

address - 2220 Perry Lane Road  
Brunswick, Georgia 31525

Mailing address - Golden Isles Ministries  
2220 Perry Lane Road  
Brunswick, Georgia 31525

Phone - 912-264-6277

Toll Free- 877-928-9200

Email - missiontrippin@hotmail.com

Web address - [www.southeastbaptistassociation.com](http://www.southeastbaptistassociation.com)

## **Southeast Baptist Association Staff**

Reverend John Carr - Associational Missionary

Mr. Peter Copeland - Mission Projects Coordinator

Mrs. Linda Pendle - Secretary

## Notebook Evaluation

Please help us ensure quality training by evaluating your visit in the following areas:

Circle the appropriate number with "1" being POOR, and "5" being EXCELLENT.

GIM Philosophies/Definition/History	1	2	3	4	5
Housing, Materials, Information	1	2	3	4	5
Preparation Before Arrival	1	2	3	4	5
Evangelism	1	2	3	4	5
FUN Camp	1	2	3	4	5
Performance Ministry	1	2	3	4	5
Beach Ministry	1	2	3	4	5
Nursing Home/Adult Day Care	1	2	3	4	5
Creative Arts	1	2	3	4	5

1. What suggestions would you give about the GIM ministry handbook?

2. How was the GIM ministry handbook helpful?

3. Which part of the GIM ministry handbook was most helpful? Why?

4. Which was least helpful? Why?

Would any additional information have been helpful to you?

Where did you hear about GIM? (Specific conference, email, by whom, etc)

---

---

---

---

---

# Golden Isles Ministries

**CHILD PROTECTION PROGRAM:** Golden Isles Ministries and Southeast Baptist Association are committed to providing a safe and secure environment for all children and youth that may participate in our programs. All churches/organizations that bring children, youth and adults to work in our summer mission program are expected to have a proper and adequate child protection program in place and in use for screening and protection against child abuse. All adult chaperones, leaders and participants 18 years and older must have been screened and approved through your church/organization's child protection program, in addition to having verification of such screened available if requested. By signing this document you are certifying on behalf of your church/organization that your church/organization has an ongoing child protection program in place for screening and protection against child abuse and that the program is being enforced.

**INDEMNITY PROVISION:** \_\_\_\_\_ [name of church/organization or group participating with Golden Isles Ministries], for itself and for and on behalf of its officers, employees, representatives, volunteers and agents (hereinafter collectively "Indemnitor") covenants and agrees that it will indemnify, protect and hold harmless Golden Isles Ministries, Inc., Southeast Baptist Association, Inc. and their officers, employees, representatives, volunteers and agents (hereinafter collectively "Indemnitee"), from and against all claims, damages, losses, liabilities, litigation, judgments, proceedings, or expenses of any kind or nature, (including attorneys fees), which may at any time be incurred by, or asserted or awarded against Indemnitee, arising directly or indirectly from, out of, or as a result of: (i) any acts or omissions of Indemnitor (specifically including any negligence), (ii) Indemnitor's breach of, violation of, or failure to fully comply with this agreement or any documents, agreements, commitments or policies provided to or for the benefit of Indemnitee, or (iii) Indemnitor's participation in the summer missions programs of Golden Isles Ministries, Inc. and Southeast Baptist Association, Inc. Further, Indemnitor does hereby waive and fully release and discharge Indemnitees from and against any and all claims, demands, damages, and losses which Indemnitor may incur resulting or arising directly or indirectly from participation in this ministry.

\_\_\_\_\_  
Signed Date

\_\_\_\_\_  
Name of: Organization, Church, Group



Notes

Notes